



FHP

MONFALCONE

CARRARA • LIVORNO • MONFALCONE • VENEZIA



FHP Holding Portuale

FHP Holding Portuale (FHP), part of F2i sgr, Italy's largest independent infrastructure funds manager, with assets of over Euro 6 billion under management, representing one of the principal Italian port hubs, specialising in the breakbulk and general cargo sector, strategically supplying and servicing some of the largest Italian industries active in the Upper Adriatic and Tyrrhenian Sea.



The first port operator in the breakbulk and general cargo sector supporting the competitiveness of the Italian industry.





CERTIFICAZIONI
ISO 9001

MarterNeri S.p.a. was established in July 2018 from the merger of Neri S.r.l. in Livorno, founded in 1920, and Mar- Ter Spedizioni S.p.A. in Monfalcone, founded in 1969. The result of the merger between these two established Companies generated a leading company specialised in the logistics of forestry products such as wood pulp and kaolin. The fusion between experience and know-how has allowed the development and success of a unique logistics company able to guarantee a full service on the supply chain. MarterNeri, with over thirty years' experience, is renowned as a reference point by the leading domestic and international wood pulp producers, international traders and agents, the major producers of kaolin and ferrous/nonferrous metals mainly located in the Americas and Europe. In December 2020 F2i Port Holding, Italy's leading infrastructure fund, signed an agreement to acquire the MarterNeri Group and becomes Italy's leading port operator in the dry bulk sector, a strategic sector for Italian industry. All logistic aspects regarding customs, freight forwarding services, ship's agent services and port services such as handling and stocking cargo within their own warehouses. Our fleet equipment comprises forklifts, trucks and trailers and we have a team of experts who are able to provide logistic solutions. We also specialise in inventory reports and auxiliary services like lashing, securing, labelling, LCL/FCL, door to door services intermodal/multimodal logistic services, electronic data interchange with customers and last but not least our number one priority: customer relationship management.

Compagnia Portuale Srl, Monfalcone (CPM) is the largest port operator in the Port of Monfalcone, providing comprehensive end to end stevedoring, transport, and logistics services to its clients since 1994 and has been part of the FHP Group since 2021. Our professionalism and outstanding services lie in our belief that no job is too big or too small and we offer our clients personalised assistance and solutions. CPM operates a large fleet of machinery and equipment including front end loaders, cranes, excavators, bulk grabs, hoppers, and fork lift trucks to handle bulk materials, general cargo, forest products, paper and more. We also have two locotracors providing us with the flexibility and independence to ensure our customers receive complete shunting services for rail wagons within the port and in the inland terminal. Large undercover areas for the storage of weather sensitive goods and hardstand areas for storing breakbulk cargo, project cargo provide an excellent feature of the port, including customs facilities and areas for temporary custody and VAT warehousing. CPM continuously invests in new equipment to improve and streamline their operations which means added value to our clients.



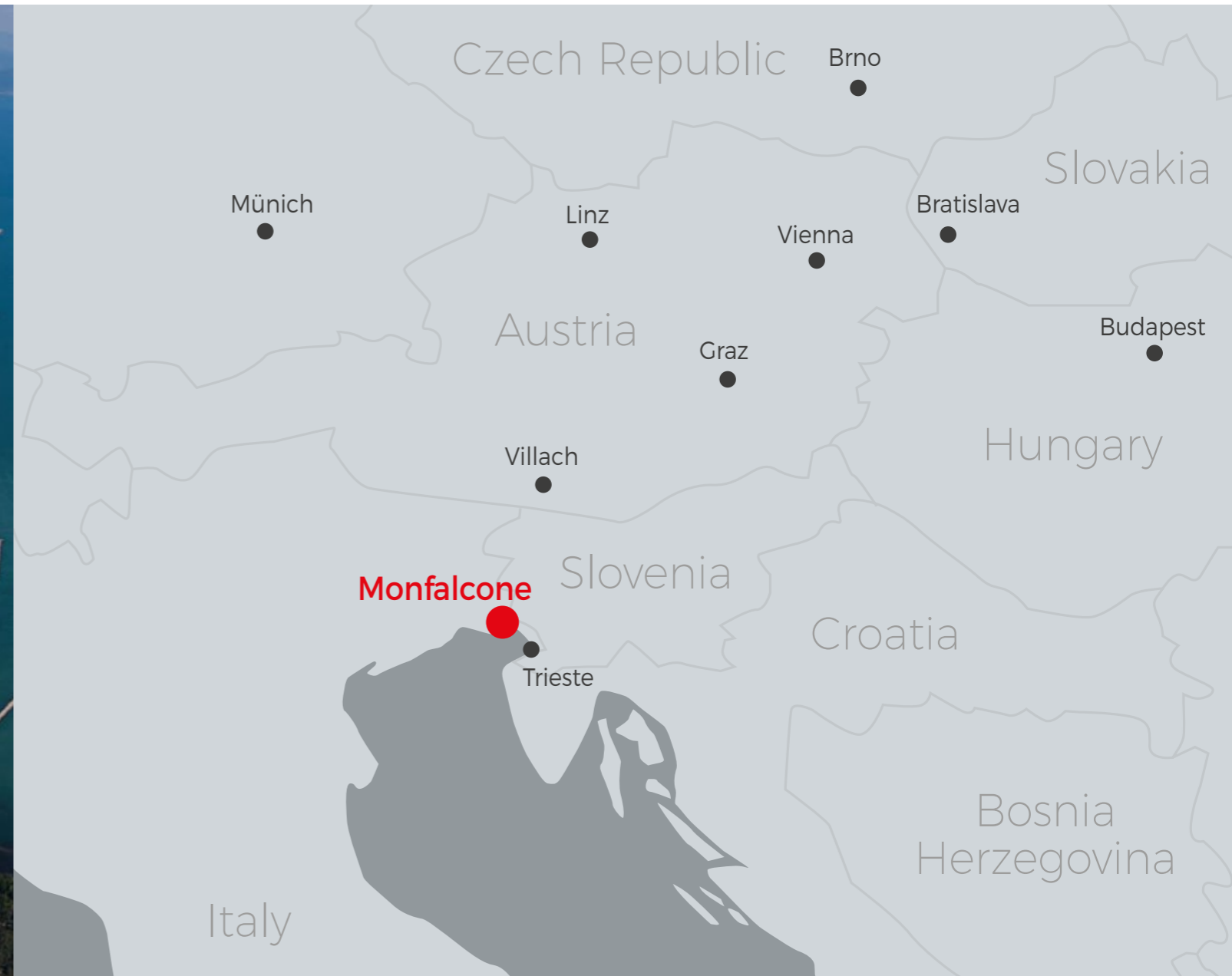
STRATEGIC LOCATION

Our strategic geographical position allows us to provide our customers with supply chain solutions covering hinterland destinations, central East European countries, and countries bordering the Mediterranean Sea. We are situated near the A23-A24 motorways and we are connected to the national and international rail infrastructure.



STRATEGIC LOCATION

The Port of Monfalcone is the most northern port of the Mediterranean, positioned towards central-eastern Europe and the Balkan area. Due to its strategic position, and excellent interconnectivity with other modes of transport (land/sea/rail), CPM can respond efficiently and rapidly to the most diverse logistics requirements ensuring swift transshipment of your products to the hinterland or other international destinations.



Services

Shipping agency :
Brokerage, Bill of Lading issuance, Ship Manifest, Disbursement Account.

Port Services, handling and transport from dock terminal to our warehouses.

Freight forwarding Services.

Loading/unloading rail wagons and trucks.

Customs facilities and services : bonded and VAT warehousing, professional consulting service, import/export/transit custom operations. Whenever you need customs expertise. We have the people, licenses and permits to clear your shipments on schedule, we can provide assistance with applications for advantageous customs regimes, procedures, licenses, and other resources.

Transport by truck/rail/sea to final destination.

Intermodal transport by rail plus “last mile service” where receivers are not equipped by a rail-connection.

Cargo tracking: Barcode scanning and transmission, RFID, stock reporting, sampling, labelling, marking.

FCL shipments, container stuffing/unstuffing, providing lashing/fixing and securing cargo, full container shipping solutions including ADR and CER.

Groupage transport in European and CIS countries.

LCL shipments all over the world.

Air shipments all over the world.

Purchasing and shipment of SOC containers, providing RINA Certificates.

Tracking of all shipments with receipt of automatic updates and alerts.

Sorting commodities per grade/type, weighing, bagging and palletizing different kinds of big bags.

Any other ancillary logistic upon request.

Services

CPM currently stevedores over 3 million tonnes of cargo annually.

We offer loading and unloading of liner vessels and/or charter vessels, railway wagons and trucks.

Multipurpose, breakbulk and bulk vessels are handled with experienced gangs and in the most professional and efficient manner.

Handling goods on pallets, big bags, bundles, pre-sling cargoes, cases, boxes and crates are all part of our day to day.

We can also provide ancillary services like labelling, packaging and marking, lashing, securing and dunnage, unlashng, and provide support and assistance with your logistic solutions.

We are a private company which means no intermediaries which translates to flexibility, no conflicts of interest and short communication lines.

We have been in business for over two decades and we know our business and our market.

We offer weighing services for both rail and road transport intermodality. At same time we offer warehouse management, optimizing the supply chain. We can store a wide range of commodities, our warehousing capitalizes on opportunities for operational improvement, leading to lower storage and distribution costs and increased productivity to the vessels.

Loading/unloading rail wagons and trucks.

Customs facilities and services : bonded and VAT warehousing, professional consulting service, import/export/transit custom operations. Whenever you need customs expertise. We have the people, licenses and permits to clear your shipments on schedule, we can provide assistance with applications for advantageous customs regimes, procedures, licenses, and other resources.

Transport by truck/rail/sea to final destination.

Intermodal transport by rail plus “last mile service” where receivers are not equipped by a rail-connection.

OPERATIONAL ACTIVITIES

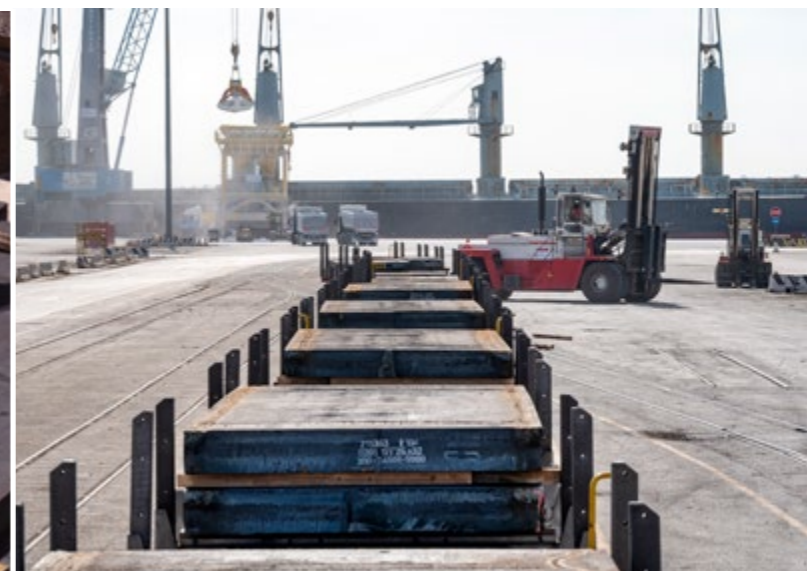
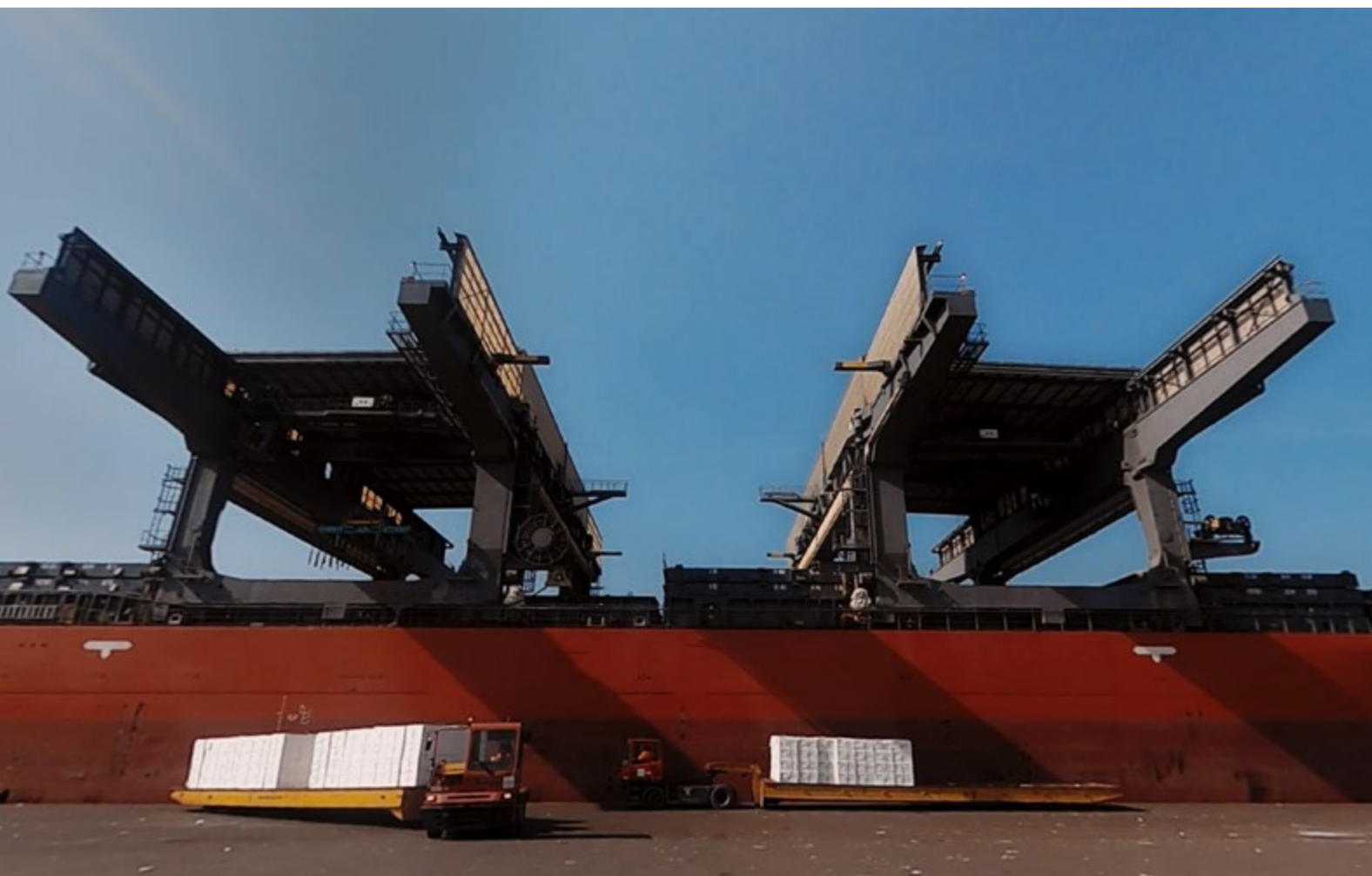
The use of specialised equipment and a constant investment on new machinery has enabled our company to progressively improve handling productivity, enhance the flexibility and the customisation of our services according to the customer's standards and demands.

MarterNeri's personnel is highly specialised and handling operations are carried out in a safe environment in accordance with regulations in force, and with periodically monitoring of machinery and equipment.

FACILITIES AND EQUIPMENT

CPM operates a large fleet of machinery and equipment including front end loaders, cranes, excavators, bulk grabs, hoppers, and fork lift trucks to handle bulk materials, general cargo, forest products, paper and more. We also have two locotracors providing us with the flexibility and independence to ensure our customers receive complete shunting services for rail wagons within the port and in the inland terminal. Large undercover areas for the storage of weather sensitive goods and hardstand areas for storing breakbulk cargo, project cargo provide an excellent feature of the port, including customs facilities and areas for temporary custody and VAT warehousing. CPM continuously invests in new equipment to improve and streamline their operations which means added value to our clients.





TRANSPORT

BY TRUCK

MarterNeri owns a fleet of tipper trucks and tautliners and has established a vast and solid long-term network with transportation companies both nationally and internationally, obtaining an important competitive advantage in terms of cost, and quality of service.

BY TRAIN

In the last 20 years the company has strengthened its contacts and partnerships with railroad operators, becoming one of the major players with forestry and steel products delivered by train in Italy. Our target is to increase the number of destinations, as well as integrating the “last mile service” to receivers whose mills are not rail connected.

BY SHIP

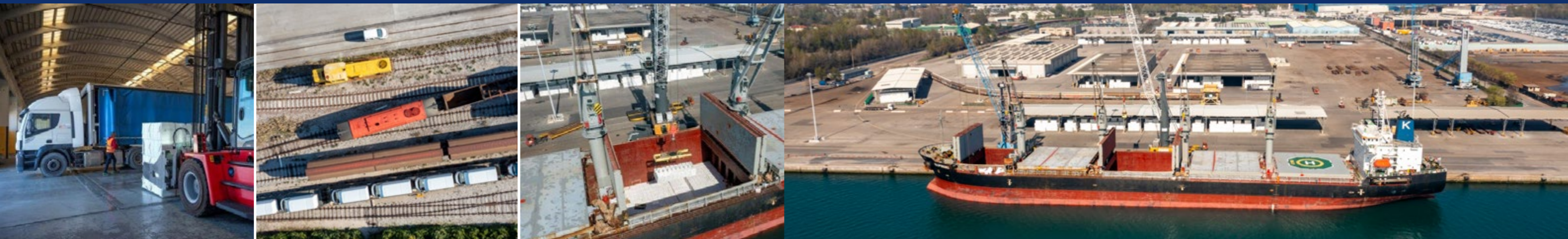
We have experience organizing transshipments from the Port of Monfalcone to several ports in the Mediterranean. We are able to organize a coaster service for all commodities.

SAFETY, QUALITY AND ACCOUNTABILITY

In all our operations safety is of supreme importance. CPM meets the standards of the International Ship and Port Facility Security Code (ISPS code) of the International Maritime Organisation. Through the collective involvement of management and employees we have created a strong safety culture that enables us to meet our objectives and support our safety strategy and all our contractors and visitors are appropriately informed.

As a logistics service provider, quality is of paramount importance to CPM. We operate under the UNI EN ISO 9001 Quality System certification and we continually implement a series of initiatives to ensure on-the-job safety and customer satisfaction.

CPM believes in investing on their employee's future. We have specialised and experienced employees and we continually invest in their training and keep them updated on the latest techniques and safety regulations.





INTERMODAL INLAND TERMINAL LOCATION

Strategic location:
APPROX. 700 M FROM PORT DOCKS

Direct connection with nearby
A4 AND A23 MOTORWAY

AN OPERATIONAL AREA OF
APPROXIMATELY 40,000 SQUARE METRES

10 RAIL TRACKS OPERATING AREA
(both storage and parking)
approximately 40,000 square metres

Accessible from VIA III ARMATA, Monfalcone

RAILWAY: overall length within Terminal >
4,500 mL (suitable for block trains), directly
connected with the Port of Monfalcone and
the national/international network.

FACILITIES TO LOAD / DISCHARGE RO-LA
trains and block trains of containers, cars/
vehicles and groupage of rail cars making CPM
even more attractive for the ease in finding
rolling stock needed for shipments.



